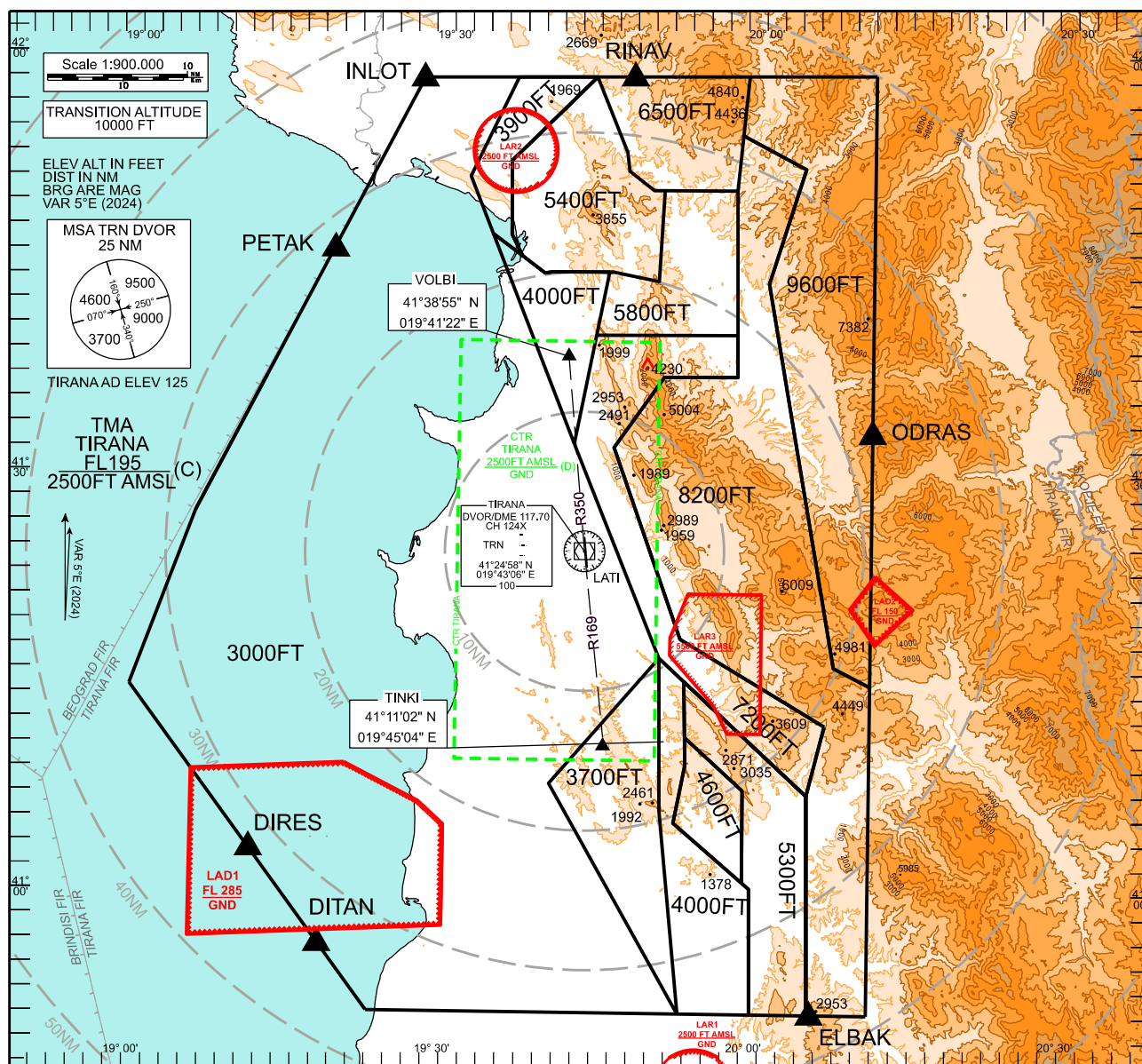


ATC SURVEILLANCE MINIMUM
ALTITUDE CHART - ICAO

| | | | | | |
|-----|---------|------|--------------------|-----|---------|
| TWR | 122.500 | ATIS | 132.275 | ACC | 127.500 |
| | 123.500 | | 133.150 136.350 | | 136.350 |

TIRANA
LATI

GENERAL INFORMATION:

- 1) The minimum vectoring altitudes within ATC Surveillance Minimum Altitude Area ensure terrain and obstacle clearance in conformity with ICAO Doc 8168 requirements. Corrections to the published minimum vectoring altitudes for low temperatures effect are applied, when necessary, by ATC.
- 2) Altitudes shown are based on QNH.
- 3) Only significant obstacles and dominant spot heights are shown.
- 4) This chart may only be used for cross-checking of altitudes assigned when in receipt of an ATC Surveillance service.

MINIMUM INITIAL ALTITUDE:

Within the ATC Minimum Surveillance Altitude Area the minimum initial altitudes shown on the chart may be assigned by the approach surveillance controller while radar vectoring.

Sectors defined by the lateral limits are shown on the next page.

OUTSIDE THE DESIGNATED ATC SURVEILLANCE MINIMUM ALTITUDE AREA

ATC shall not at any time clear or vector aircraft below the published minimum en-route levels for aircraft operating outside the designated ATC Surveillance minimum Altitude Area.

LOSS OF COMMUNICATION PROCEDURES

Initial Approach

Aircraft that are being vectored on base leg towards east and no instruction to turn onto the final approach track of the runway in use is received from ATC before intercepting respectively Radial 350 for Runway 17 and Radial 169 for Runway 35, shall turn to intercept the final approach track and execute the appropriate instrument approach procedure.

Intermediate and final Approach

Continue visually or by means of an appropriate approved final approach aid. If not possible follow the DVOR/DME Missed Approach Procedure.

In all cases where the aircraft returns to the holding facility the procedure to be adopted is the basic radio failure procedure detailed at ENR 1.6.

CHANGE: BACKGROUND INFORMATION UPDATED

| | | | | | | | | |
|--------------------|----------|---|---------|----------|---|---------|----------|----------------------|
| 3000: | | | | | | | | |
| 415847N | 0192711E | - | 415854N | 0193611E | - | 415145N | 0193142E | - 414739N 0193355E - |
| 413240N | 0194158E | - | 411722N | 0195019E | - | 410819N | 0194000E | - 405153N 0195227E - |
| 405151N | 0192301E | - | 411456N | 0190008E | - | 412409N | 0190426E | - 412730N 0190600E |
| 3700: | | | | | | | | |
| 411722N | 0195019E | - | 410626N | 0195031E | - | 405153N | 0195227E | - 410819N 0194000E |
| 3900: | | | | | | | | |
| 415854N | 0193611E | - | 415145N | 0193142E | - | 414739N | 0193355E | - 414606N 0193645E - |
| 414736N | 0193543E | - | 415254N | 0193537E | - | 415859N | 0194342E | |
| 4000 North: | | | | | | | | |
| 413240N | 0194158E | - | 414028N | 0194358E | - | 414501N | 0194508E | - 414458N 0193940E - |
| 414453N | 0193856E | - | 414606N | 0193645E | - | 414739N | 0193355E | |
| 4000 South: | | | | | | | | |
| 411722N | 0195019E | - | 411543N | 0195243E | - | 411142N | 0195250E | - 410942N 0195253E - |
| 410534N | 0195151E | - | 410053N | 0195905E | - | 405152N | 0195914E | - 405153N 0195227E - |
| 410626N | 0195031E | | | | | | | |
| 4600: | | | | | | | | |
| 411142N | 0195250E | - | 410942N | 0195253E | - | 410534N | 0195151E | - 410120N 0195824E - |
| 410756N | 0195821E | | | | | | | |
| 5300: | | | | | | | | |
| 411543N | 0195243E | - | 410735N | 0200425E | - | 405151N | 0200438E | - 405152N 0195914E - |
| 410053N | 0195905E | - | 410120N | 0195824E | - | 410756N | 0195821E | - 411142N 0195250E |
| 5400: | | | | | | | | |
| 415859N | 0194342E | - | 415336N | 0194640E | - | 415216N | 0194654E | - 415053N 0194918E - |
| 415054N | 0195019E | - | 414422N | 0194952E | - | 414500N | 0194534E | - 414501N 0194508E - |
| 414458N | 0193940E | - | 414453N | 0193855E | - | 414606N | 0193645E | - 414736N 0193543E - |
| 415254N | 0193537E | | | | | | | |
| 5800: | | | | | | | | |
| 414422N | 0194952E | - | 415054N | 0195019E | - | 415056N | 0195718E | - 414034N 0195728E - |
| 414028N | 0194358E | - | 414501N | 0194508E | - | 414500N | 0194534E | |
| 6500: | | | | | | | | |
| 415054N | 0195019E | - | 415056N | 0195718E | - | 415453N | 0195748E | - 415908N 0195820E - |
| 415859N | 0194342E | - | 415336N | 0194640E | - | 415216N | 0194654E | - 415053N 0194918E |
| 7200: | | | | | | | | |
| 414028N | 0194358E | - | 414034N | 0195728E | - | 413734N | 0195731E | - 413731N 0195030E - |
| 413226N | 0194547E | - | 411845N | 0195217E | - | 411235N | 0200605E | - 410735N 0200425E - |
| 411543N | 0195243E | - | 411722N | 0195019E | - | 413240N | 0194158E | |
| 8200: | | | | | | | | |
| 415056N | 0195718E | - | 415453N | 0195748E | - | 415231N | 0200351E | - 414417N 0200025E - |
| 411646N | 0200654E | - | 411526N | 0201022E | - | 405150N | 0201014E | - 405151N 0200438E - |
| 410735N | 0200425E | - | 411235N | 0200605E | - | 411845N | 0195217E | - 413226N 0194547E - |
| 413731N | 0195030E | - | 413734N | 0195731E | - | 414034N | 0195728E | |
| 9600: | | | | | | | | |
| 415908N | 0195820E | - | 415453N | 0195748E | - | 415231N | 0200351E | - 414417N 0200025E - |
| 411646N | 0200654E | - | 411526N | 0201022E | - | 415914N | 0201035E | |